



pop-up

kitchen pia

**An innovative concept
for saving space**

dizzconcept

Pop-up kitchen PIA is a result of an extensive research on improving the quality of living in small spaces. The concept behind PIA saves valuable space and ensures better use of available space without compromises in terms of interior design. A brand new approach to developing living spaces enables its applicability to span across small flats, offices, tourist apartments, guest houses, and numerous other scenarios. Pia was awarded multiple prestigious awards, one of which is eco-friendly product of the year in the furniture category. We are proud to take part in preserving the environment.

We're pretty sure there's not a soul in the world that wouldn't want this amazing invention in their home.

vurni.com

Perfect solution for small house.

88designbox.com

This little dynamo packs a punch!

dwell.com

Sustaining valuable space with maximum utility.

homecrux.com

This small innovative kitchen is a compact substitute for the classic kitchen.

LivingInAShoeBox.com

An ingenious invention...

trendletter.com

pop-up kitchen pia

**An innovative concept
for saving space**

design: Darko Špiljarić

interior
innovation
award
2015

Best of Best



**Green
Product Award**
Winner 2016

HOLIDAY HOME

Fully equipped and just as
functional as the standard
size kitchen





URBAN APARTMENT

Save precious space and
obtain additional 5m²



PIA ALTA



VACATION RENTAL

Use your space to the fullest for maximum relaxation





STUDENT ACCOMODATION

Enjoy this highly functional
and fun kitchen



PIA PETITE



OFFICE

Impress your business
partners with a kitchen
unlike any other





HOME WELLNESS / GYM

Ideal solution for an
additional kitchen



PIA PETITE



MICRO APARTMENT

PIA gives you the maximum out of minimum space.





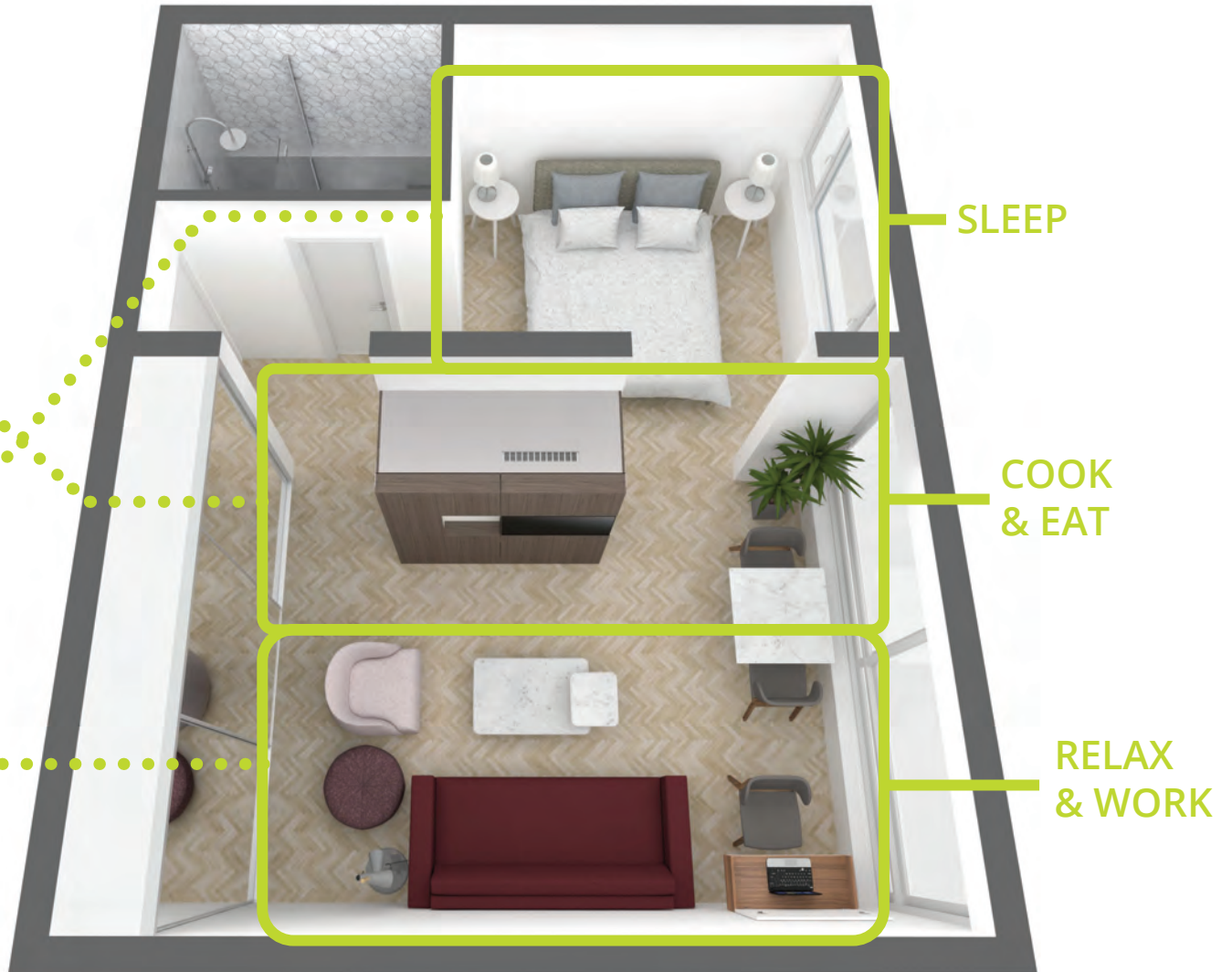
Enjoy smarter way of living, working and vacationing. Forget small, awkward spaces. There is an easier way of functional living...



COOK
& EAT

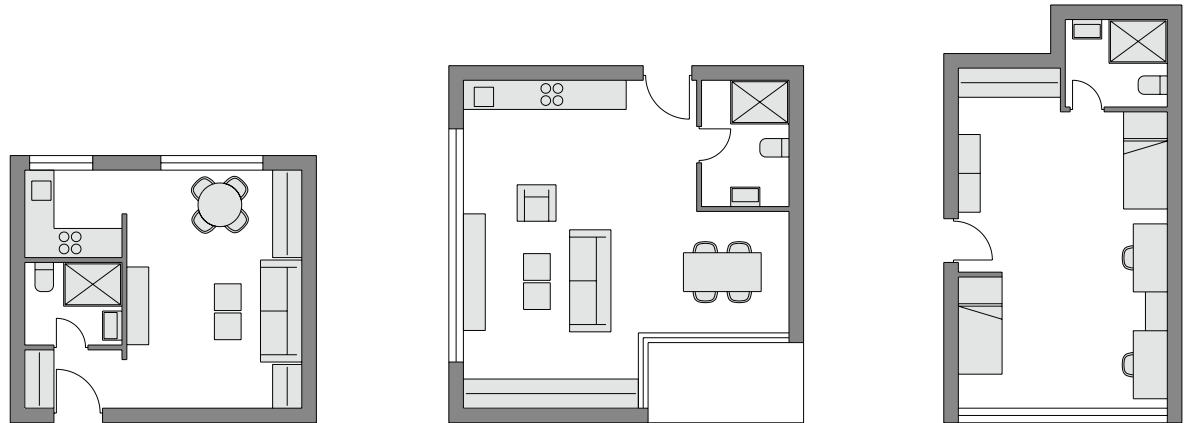
RELAX,
SLEEP
& WORK

living with pia

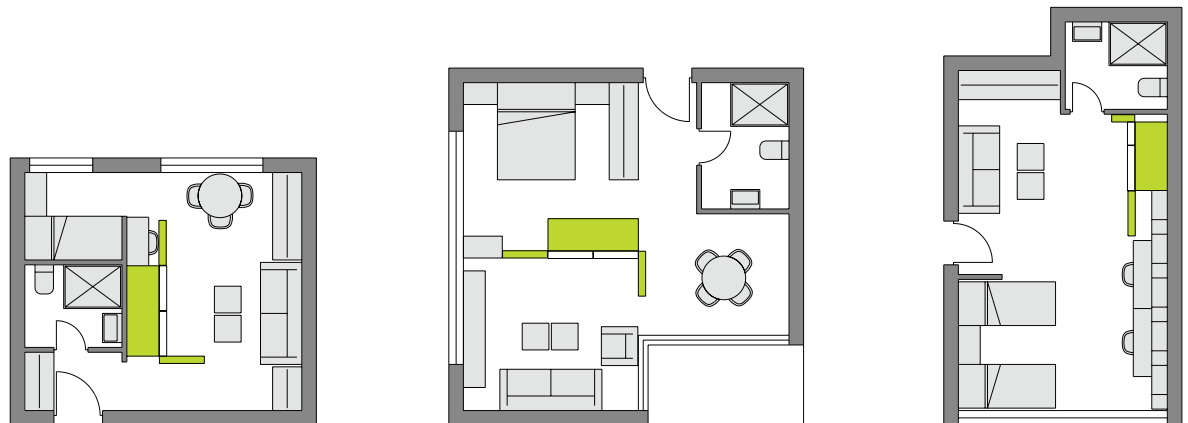


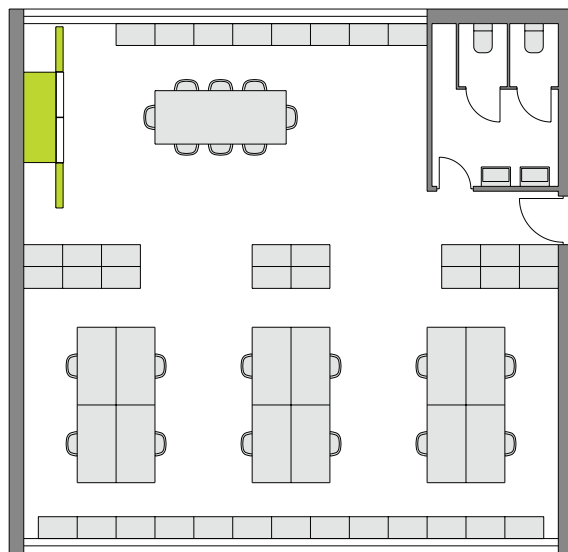
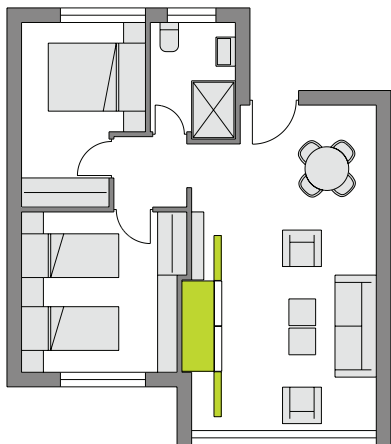
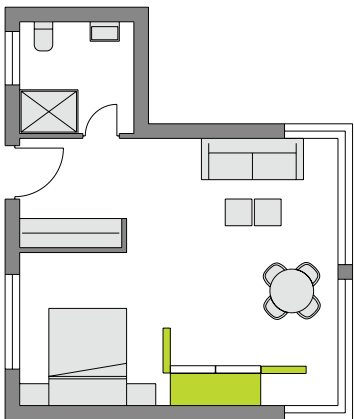
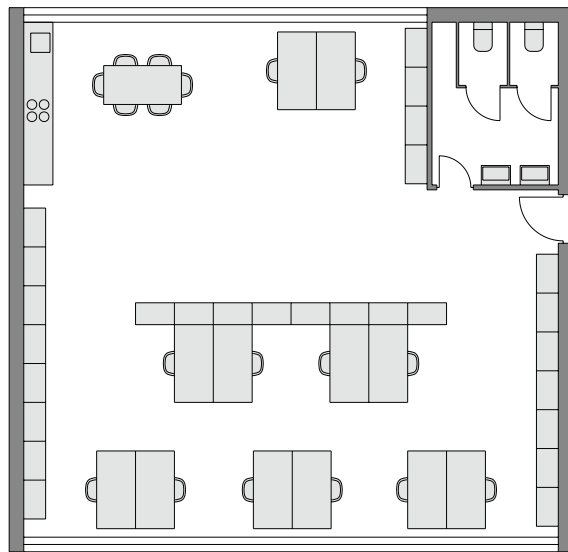
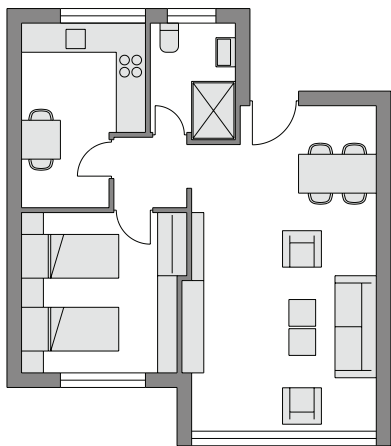
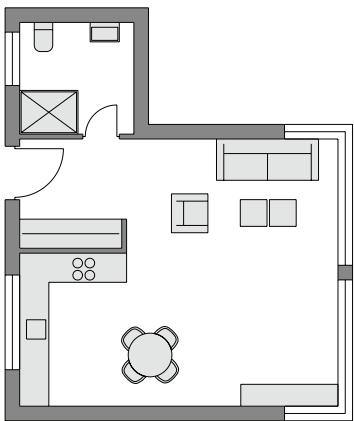
PIA enables new approach to conventional space design and new possibilities in designing small spaces. Multifunctional concept combines two living areas in residential, work and vacation spaces. This is a smart solution for spaces of limited spatial capacity: it saves space and increases functionality (conversion of existing spaces).

BEFORE



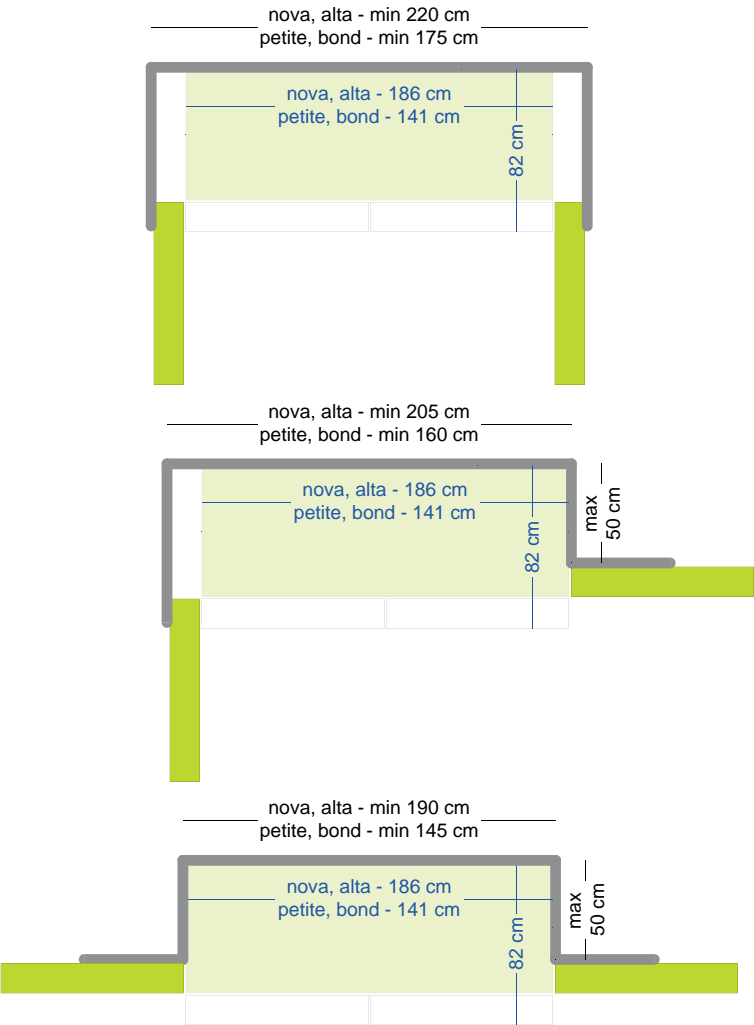
AFTER



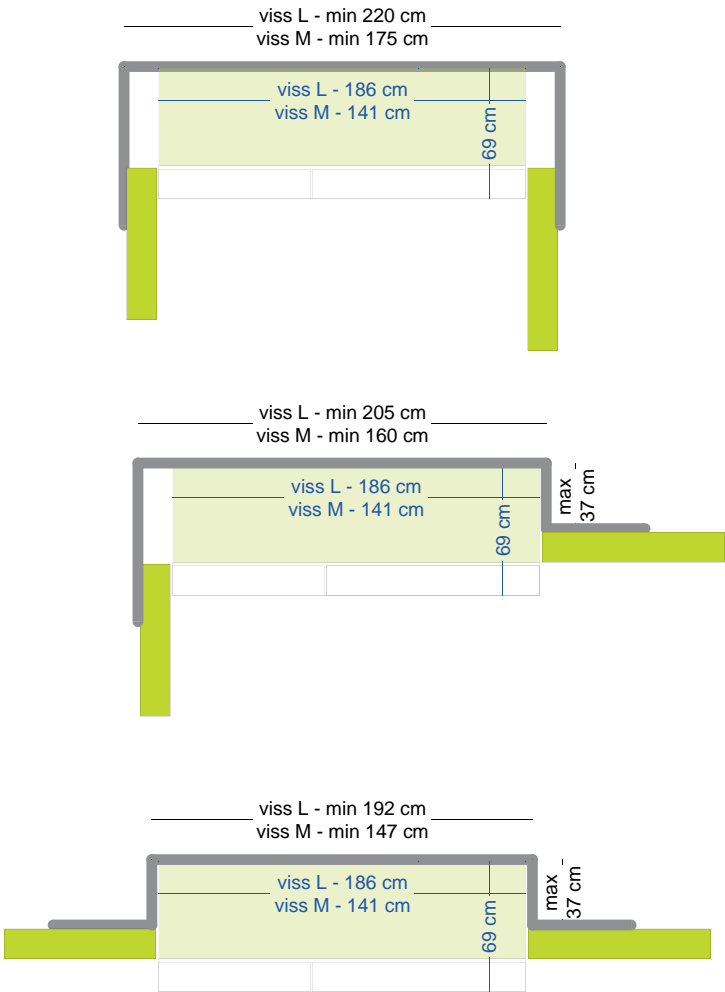


DOOR TYPES

ONSET DOORS



Niche dimensions for kitchen with onset doors
(Nova, Alta, Petite, Bond)



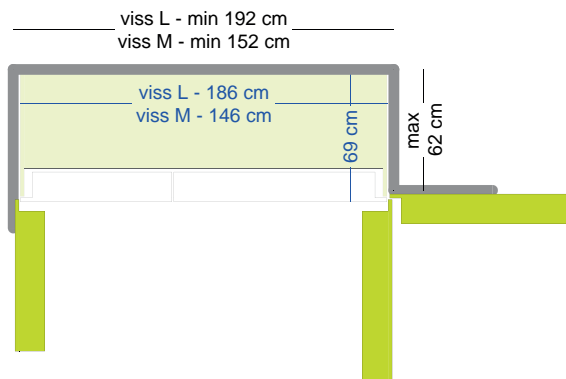
Niche dimensions for kitchen with onset doors
(Viss L, Viss, M)

SPACE REQUIREMENTS

INSET DOORS



Niche dimensions for kitchen with inset doors
(Nova, Alta, Petite, Bond)



Niche dimensions for kitchen with inset doors
(Viss L, Viss M)

One of PIA's many advantages is its ability to be placed anywhere: against a wall, in a corner, in a niche or in the center of space.

When placing it in a niche, there are certain dimension requirements one must mind. PIA model is chosen depending on the width and depth of the niche.

PIA is configured with base unit (NOVA, ALTA, PETITE, BOND, VISS) and onset or inset doors.

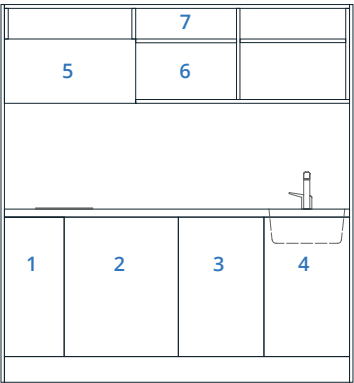
PIA BASE UNIT is 66 cm deep, and comes in two widths - 184 and 141 cm. Models NOVA, ALTA AND VISS L are 184 cm wide. Models PETITE, BOND AND VISS M are 141 cm wide. Each model can be mounted either with onset or inset doors.

ONSET doors are 15 cm deep doors which are mounted on top of base unit. Together with 66 cm of base unit depth, this kitchen is 82 cm deep in total.

INSET doors are also 15 cm deep door which enter the space of base unit. This saves even more space and makes the kitchen 69 cm deep.

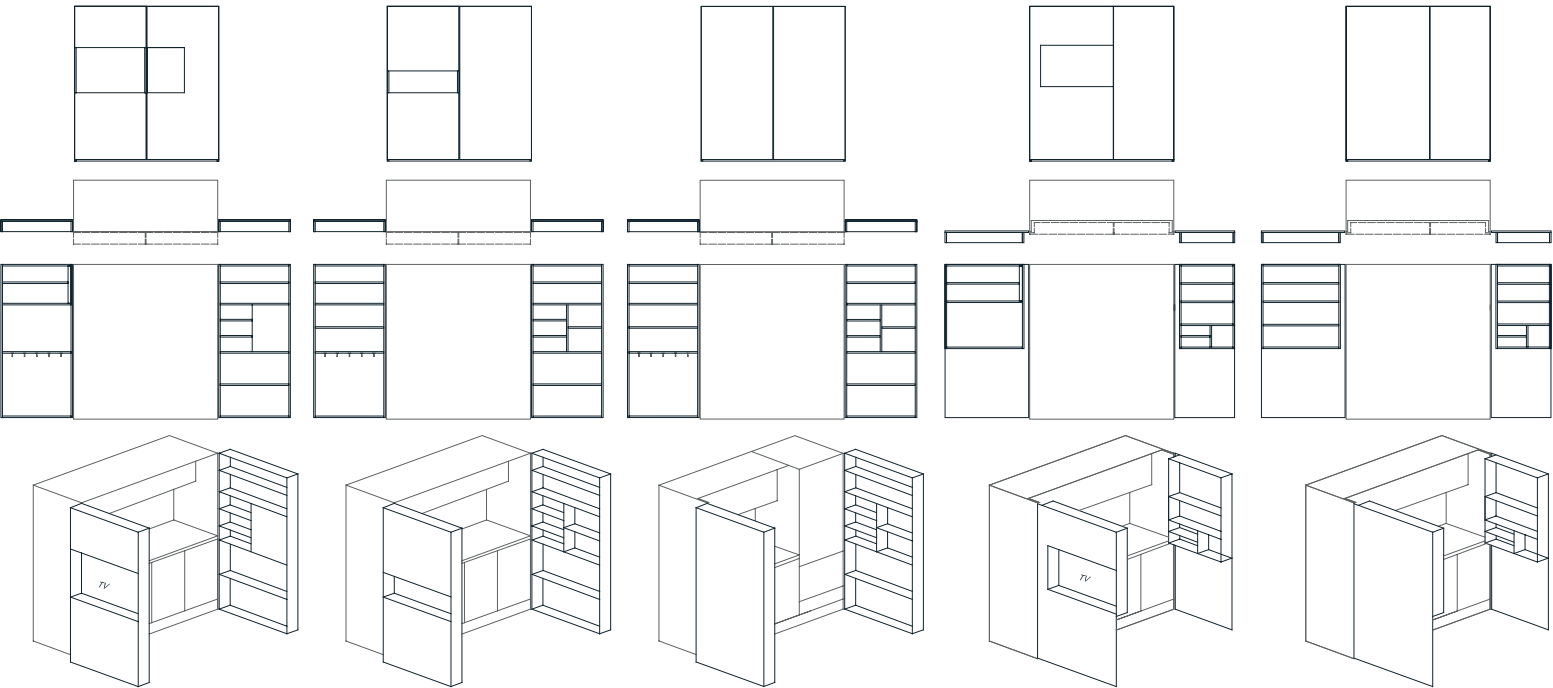
Doors can be opened at any angle (0-180°) which is very helpful when planning the installation spot.

BASE UNIT



- 1 | 32 cm | cabinet with cooktop, drawer and a shelf
- 2 | 60 cm | place for refrigerator, oven and a drawer or cabinet with a shelf
- 3 | 45 cm | space for a built-in dish washer or cabinet with a shelf
- 4 | 45 cm | sink, faucet and waste separator
- 5 | 69 cm | built-in hood, electricity installations and sockets
- 6 | 113 cm | place for free standing microwave and open shelf
- 7 | 182 cm | open shelf

DOOR OPTIONS



N1

*onset door
with 40" TV niche*

N2

*onset door
with low shelf*

N3

*onset door
with flat front*

N4

*inset door
with 40" TV niche*

N5

*inset door
with flat front*

Pia Nova

DIMENSIONS

closed 186 x 82 x 200 cm

open 374 x 66 x 200 cm

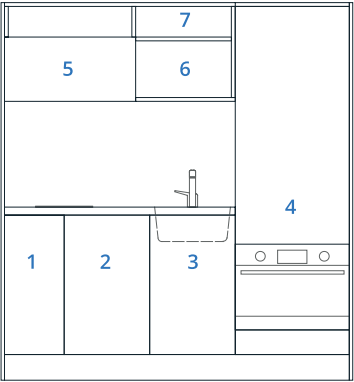
MATERIALS

HPL faced particle board or veneer frame,
doors, cabinets and inside doors

Worktop laminate 38 mm with inox sink, HPL
6 mm with inox sink or composite material
(kerrock) 6 mm worktop, sink and work area
sides



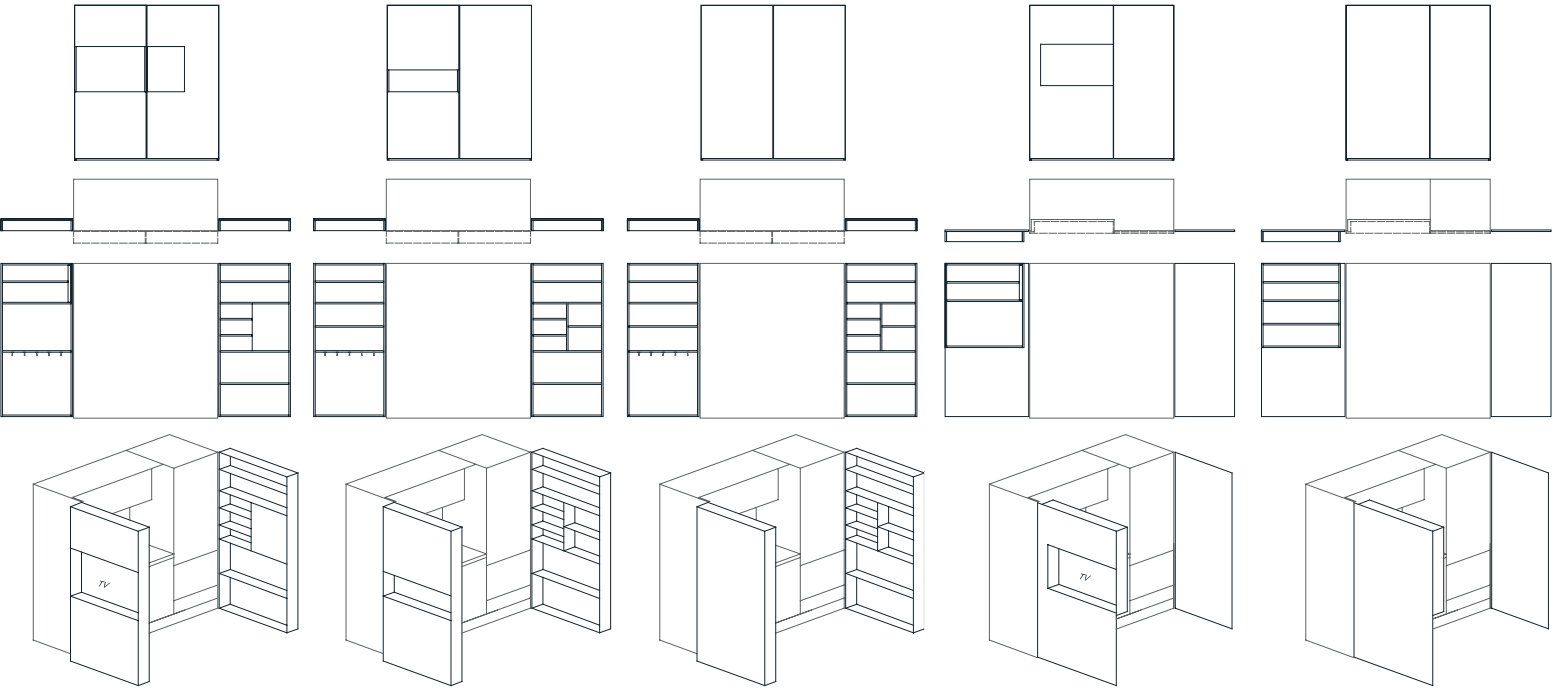
BASE UNIT



- 1 | 32 cm | cabinet with cooktop, drawer and a shelf
- 2 | 45 cm | space for a built-in dish washer or cabinet with a shelf
- 3 | 45 cm | sink, faucet and waste separator
- 4 | 60 cm | place for high refrigerator, free standing microwave and a drawer or place for high refrigerator, oven and a drawer

- 5 | 69 cm | built-in hood, electricity installations and sockets
- 6 | 53 cm | open shelf or place for free standing microwave
- 7 | 122 cm | open shelf

DOOR OPTIONS



A1
onset door
with 40" TV niche

A2
onset door
with low shelf

A3
onset door
with flat front

A4
inset door
with 40" TV niche

A5
inset door
with flat front

Pia Alta

DIMENSIONS

closed 186 x 82 x 200 cm

open 374 x 66 x 200 cm

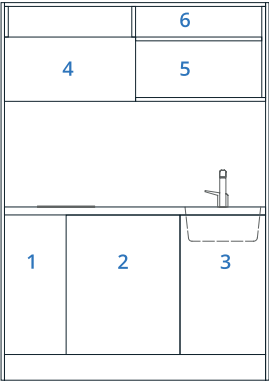
MATERIALS

HPL faced particle board or veneer frame, doors, cabinets and inside doors

Worktop laminate 38 mm with inox sink, HPL 6 mm with inox sink or composite material (kerrock) 6 mm worktop, sink and work area sides



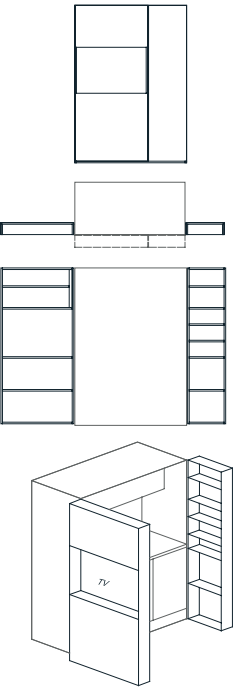
BASE UNIT



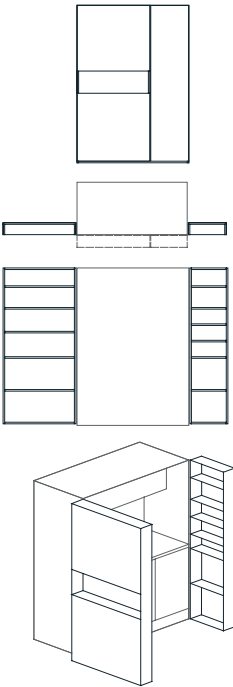
- 1 | 32 cm | cabinet with cooktop, drawer and a shelf
- 2 | 60 cm | place for refrigerator, oven and a drawer or cabinet with a shelf
- 3 | 45 cm | sink, faucet and waste separator

- 4 | 69 cm | built-in hood, electricity installations and sockets
- 5 | 68 cm | place for free standing microwave
- 6 | 137 cm | open shelf

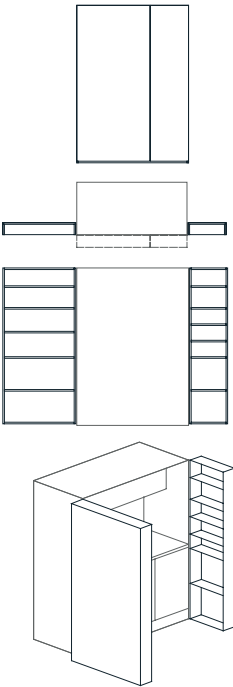
DOOR OPTIONS



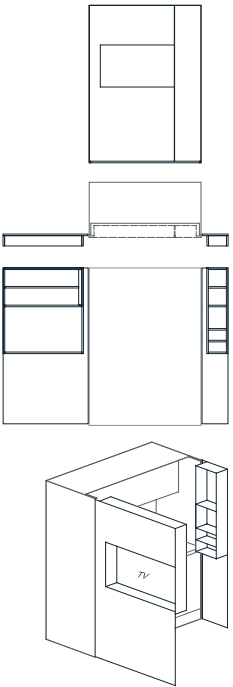
P1
*onset door
with 40" TV niche*



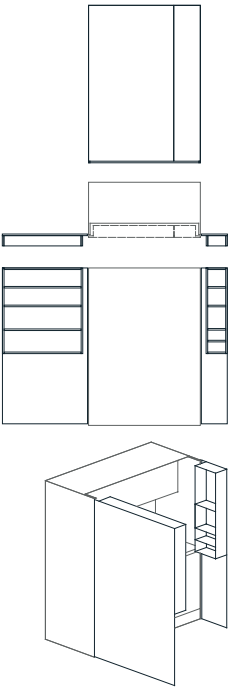
P2
*onset door
with low shelf*



P3
*onset door
with flat front*



P4
*inset door
with 40" TV niche*



P5
*inset door
with flat front*

Pia Petite

DIMENSIONS

closed 141 x 82 x 200 cm

open 284 x 66 x 200 cm

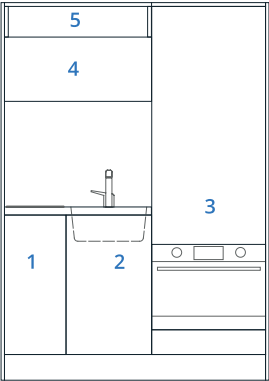
MATERIALS

HPL faced particle board or veneer frame, doors, cabinets and inside doors

Worktop laminate 38 mm with inox sink, HPL 6 mm with inox sink or composite material (kerrock) 6 mm worktop, sink and work area sides



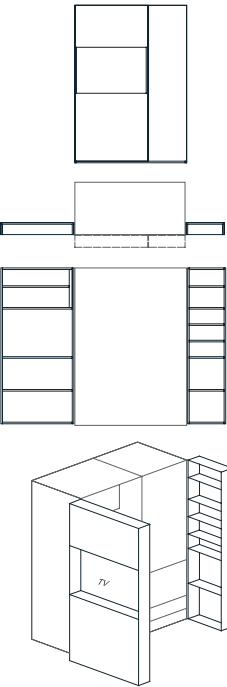
BASE UNIT



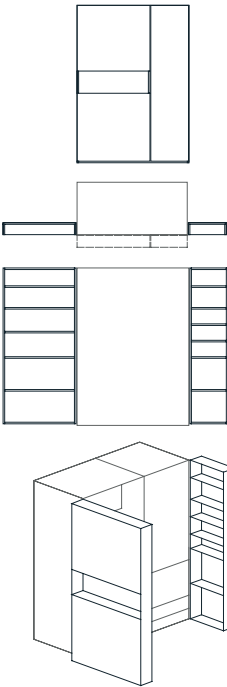
- 1 | 32 cm | cabinet with cooktop, drawer and a shelf
- 2 | 45 cm | sink, faucet and waste separator
- 3 | 60 cm | place for high refrigerator, free standing microwave and a drawer or place for high refrigerator, oven and a drawer

- 4 | 77 cm | built-in hood, electricity installations and sockets
- 5 | 77 cm | open shelf

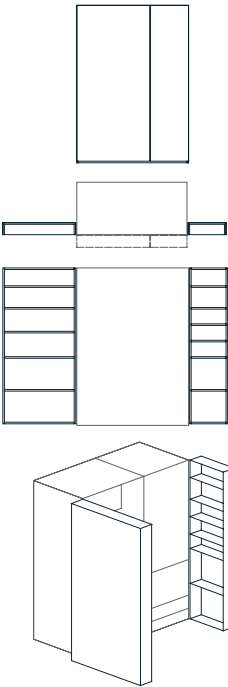
DOOR OPTIONS



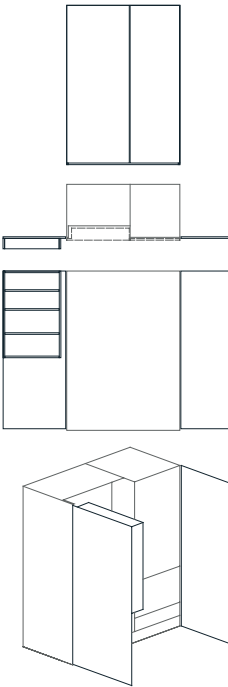
B1
*onset door
with 40" TV niche*



B2
*onset door
with low shelf*



B3
*onset door
with flat front*



B4
*inset door
with flat front*

Pia Bond

DIMENSIONS

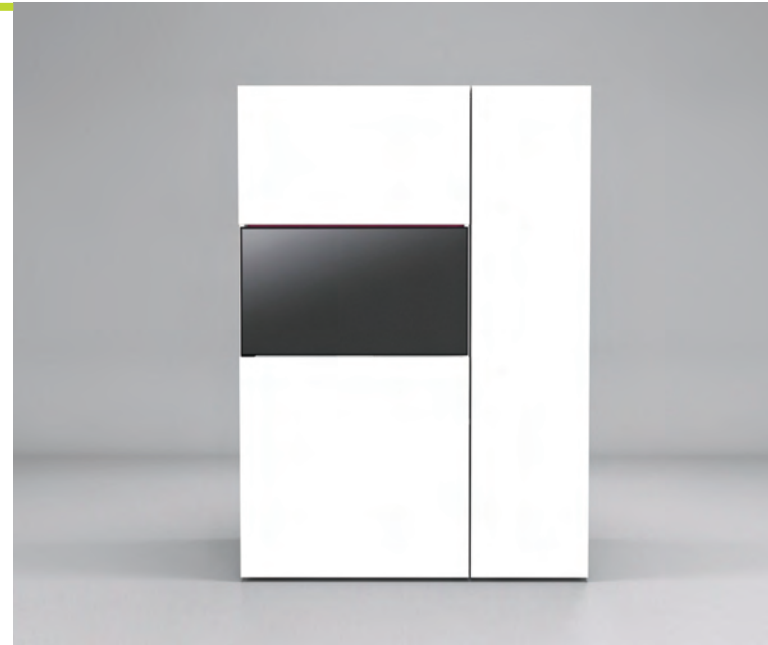
closed 141 x 82 x 200 cm

open 284 x 66 x 200 cm

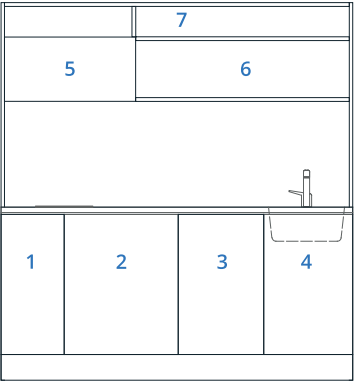
MATERIALS

HPL faced particle board or veneer frame, doors, cabinets and inside doors

Worktop laminate 38 mm with inox sink, HPL 6 mm with inox sink or composite material (kerrock) 6 mm worktop, sink and work area sides

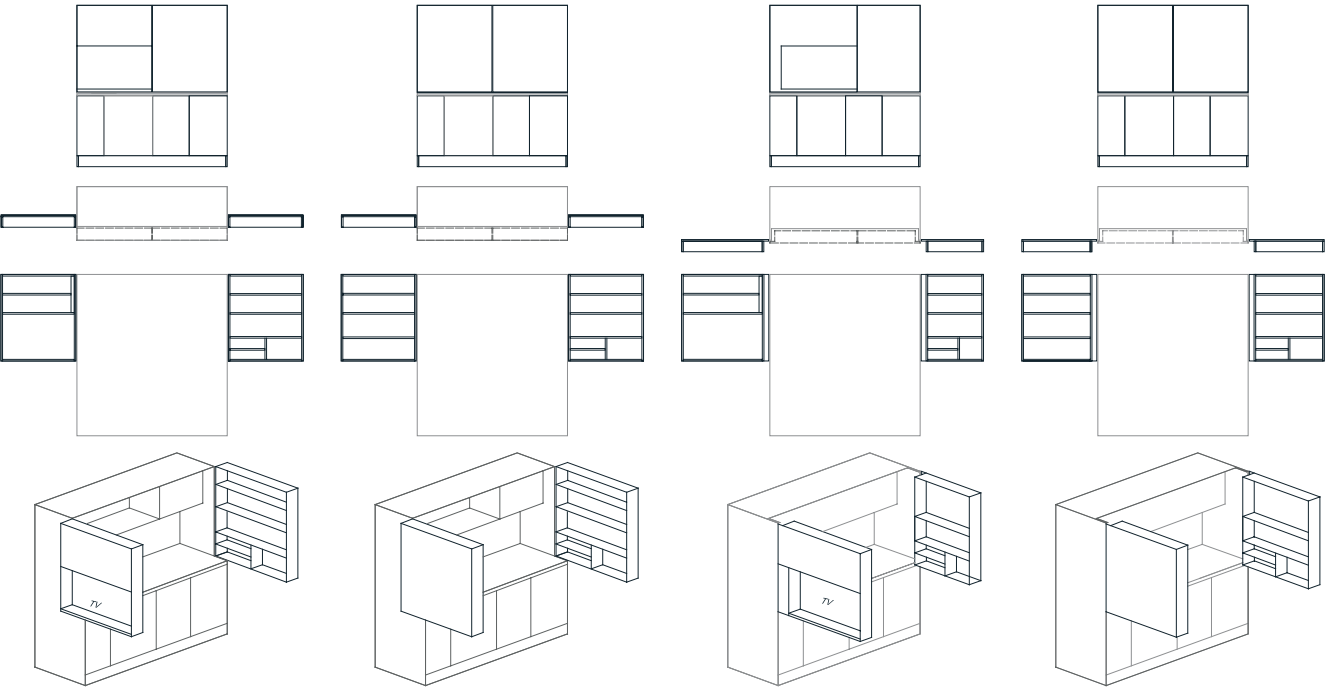


BASE UNIT



- 1 | 45 cm | sink, faucet and waste separator
- 2 | 45 cm | space for a built-in dish washer or cabinet with a shelf
- 3 | 60 cm | place for refrigerator, oven and a drawer or cabinet with a shelf
- 4 | 32 cm | cabinet with cooktop, drawer and a shelf
- 5 | 69 cm | built-in hood, electricity installations and sockets
- 6 | 113 cm | open shelf or place for free standing microwave
- 7 | 182 cm | open shelf

DOOR OPTIONS



L1
onset door
with 40" TV niche

L2
onset door
with flat front

L3
inset door
with 40" TV niche

L4
inset door
with flat front

Pia Viss L

DIMENSIONS

closed 186 x 69 x 200 cm

open 374 x 69 x 200 cm

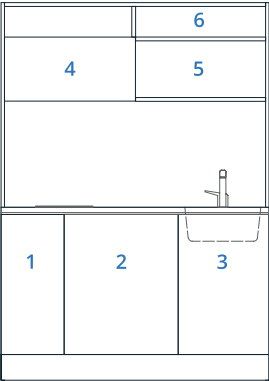
MATERIALS

HPL faced particle board frame, doors, cabinets and inside doors

Worktop laminate 38 mm with inox sink, HPL 6 mm with inox sink or composite material (kerrock) 6 mm worktop and sink



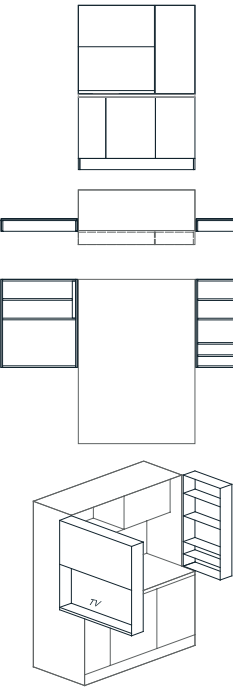
BASE UNIT



- 1 | 45 cm | sink, faucet and waste separator
- 2 | 60 cm | place for refrigerator, oven and a drawer or cabinet with a shelf
- 3 | 37 cm | cabinet with cooktop, drawer and a shelf

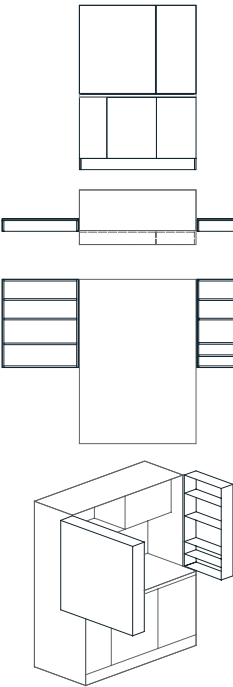
- 4 | 69 cm | built-in hood, electricity installations and sockets
- 5 | 73 cm | open shelf or place for free standing microwave
- 6 | 142 cm | open shelf

DOOR OPTIONS



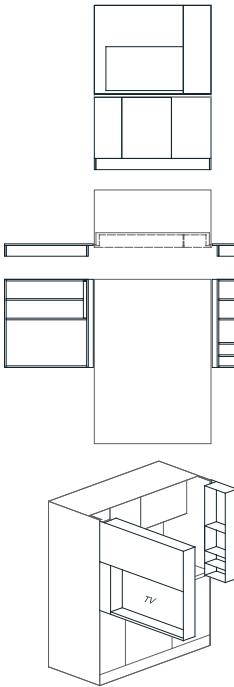
M1

onset door
with 40" TV niche



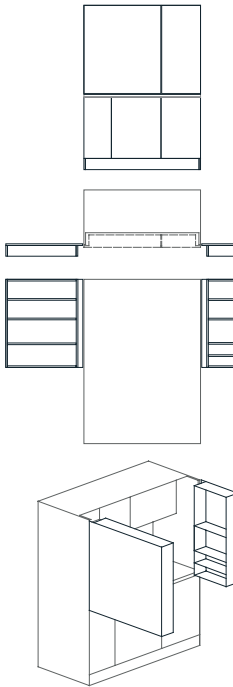
M2

onset door
with flat front



M3

inset door
with 40" TV niche



M4

inset door
with flat front

Pia Viss M

DIMENSIONS

closed 146 x 69 x 200 cm

open 284 x 69 x 200 cm

MATERIALS

HPL faced particle board frame, doors, cabinets and inside doors

Worktop laminate 38 mm with inox sink, HPL 6 mm with inox sink or composite material (kerrock) 6 mm worktop and sink

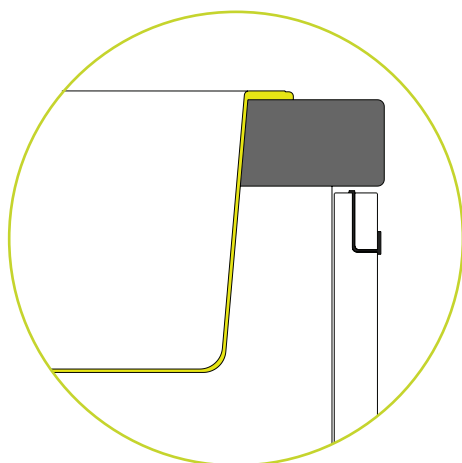


WORKTOP TYPES

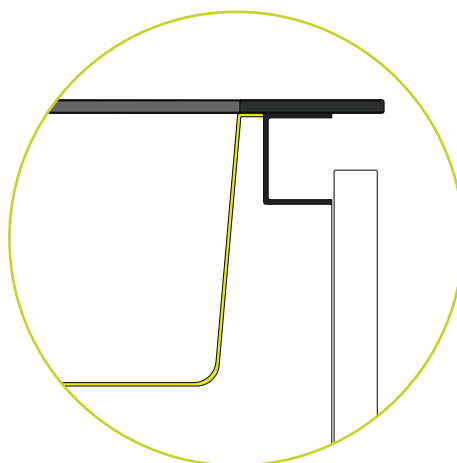
There are three types of worktops for PIA kitchen to choose from: 38 mm thick laminate board, 6 mm thick HPL compact laminate boards with black core, and 6 mm thick composite material Kerrock board.

In regard to selecting the worktop, there is also a difference between handles on lower cabinets. If selecting a 38 mm laminate board, the lower cabinets have visible inset aluminium handles. When selecting 6 mm HPL compact or Kerrock board, there is a metal profile under the worktop so the cabinets have no visible handles.

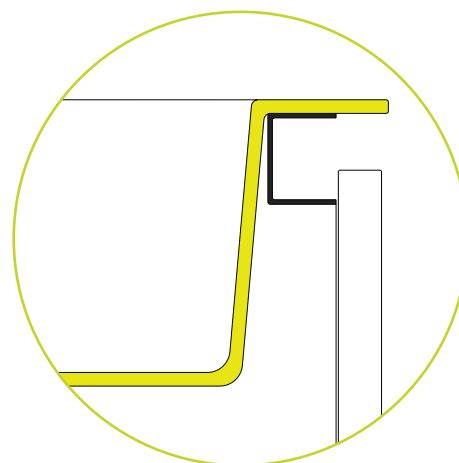
To prevent water penetration, the worktop is sealed by an aluminium profile along the sides and back of the kitchen. When selecting Kerrock worktop, there is a possibility of covering the entire work area (worktop, sides and back) with Kerrock. This can be made on demand.



38 MM THICK LAMINATE
with inset stainless steel sink



**6 MM HPL COMPACT LAMINATE WITH
BLACK CORE**
with undermount stainless steel sink



6 MM COMPOSITE MATERIAL KERROCK
with solid surface seamlessly
integrated sink

DETAILS

In terms of design PIA has put an emphasis on many subtle details which make this product a high end piece of furniture.

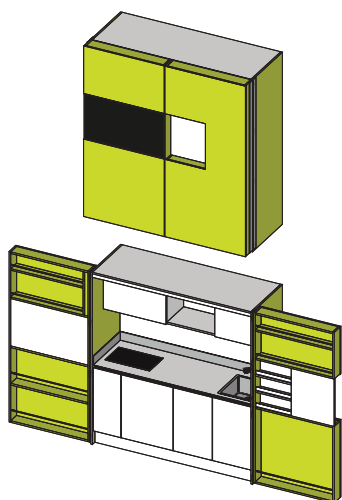
High quality materials and textures, fittings and appliances ensure satisfaction even to the most demanding user. A wide selection of predefined colors as well as custom made combinations guarantee to match both existing as well as new spaces.

This has been confirmed by several international award juries so far. PIA has been awarded International Innovation Award - Mobil Optimum Award (2014), Interior Innovation Award - Best of Best (2015), Green Product Award - Winner (2016), and IDEA Award - Selection (2016).

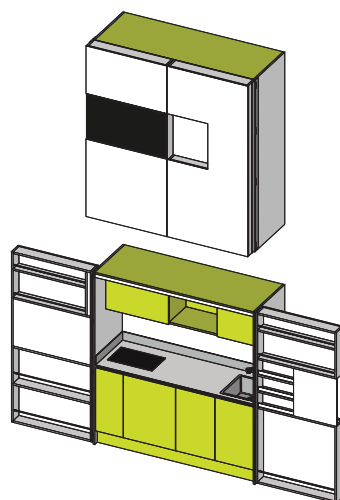


COLOR SELECTION

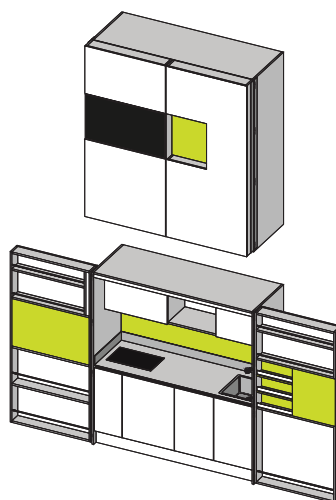
When planning your PIA, you can select among several colors and surfaces to match the tone of your overall space. To make this selection easier, we've divided PIA into four areas.



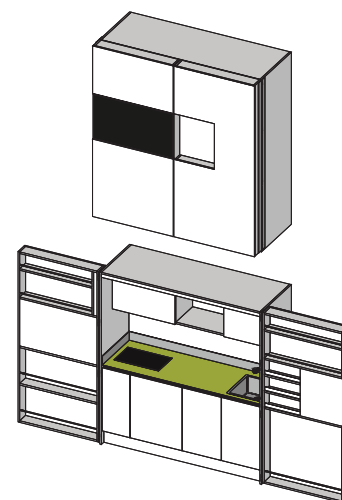
AREA 1
outer sides and doors



AREA 2
lower doors
and upper cabinets



AREA 3
central door area
and kitchen back



AREA 4
worktop

Check out our complete color selection and limited editions online at www.dizzconcept.com

On the next page there are several preselected color combinations. There are numerous possible combinations and anyone can combine colors to compliment their space.



pia around the world



Pia has found its place in many homes so far: serving as a second kitchen in big houses in USA and Canada, fully equipped space saving kitchen in micro apartments of Hong Kong and Taipei, as well as non-intrusive kitchen in exclusive holiday homes on Mediterranean coast.







DESIGNER



In 1990, architect Darko Špiljarić founded the company INkea which changed its name to dizz concept as of January 2016. His critically acclaimed design focuses primarily on innovation and retaining high standards in regards to ergonomics and ecology.

NOTES

DISCLAIMER

Photos are for illustrative purposes only. Actual colors may vary. This brochure is for informational purposes only and is made in accordance with the information at the time of printing. Due to possible discontinuations or additions to options and finishes, we kindly ask you to contact us for all queries regarding this product or any additional or new information you might require to reach final purchase decision. We reserve the right to make any necessary modifications and improvements to the product illustrated in this brochure.

LEGAL

Pop-up kitchen Pia design is protected under law. All intellectual property rights, such as dizzconcept trademark and copyrights are reserved. Nothing contained in this brochure may be reproduced or sold without our written permission. // dizz concept Ltd. conforms to the Quality Management System standard ISO 9001:2008 and Environmental Management System standard 14001:2004

All rights reserved. ©2017 dizzconcept



DIZZ CONCEPT LTD.
Zavrtnica 5, Zagreb, Croatia
t.+385 1 484 1111
e. info@dizzconcept.com
www.dizzconcept.com

AUTHORISED RESELLER

